

# west

THE PROPERTY CONSULTANCY

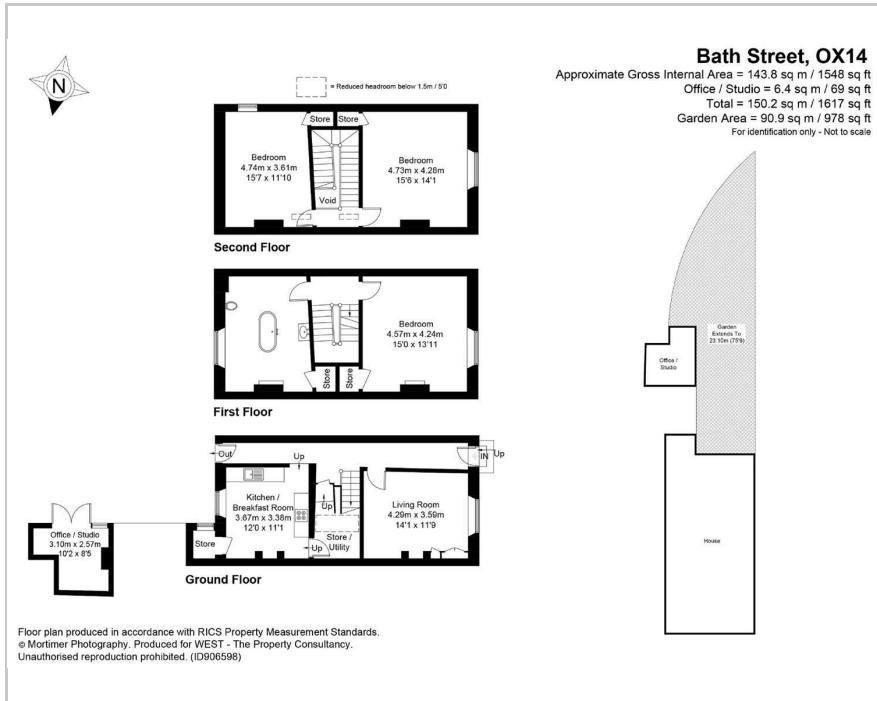


49 Bath Street, Abingdon On Thames, OX14 1EA

Guide Price £675,000



## Floor Plan



## Area Map



These particulars, whilst believed to be accurate are set out as a general outline only for guidance and do not constitute any part of an offer or contract. Intending purchasers should not rely on them as statements of representation of fact, but must satisfy themselves by inspection or otherwise as to their accuracy. No person in this firm's employment has the authority to make or give any representation or warranty in respect of the property.

216 Banbury Road, Oxfordshire, OX2 7BY  
 Tel: 01865 510000 Email: [oxford@west-tpc.co.uk](mailto:oxford@west-tpc.co.uk) <https://www.west-tpc.co.uk>

## Accommodation

- Georgian Town House
- Rented Parking Space adjacent
- Planning Consent for 4th Bedroom
- Sheltered Rear Garden 63ft max
- 3 Generous Bedrooms
- Huge Bathroom
- Sitting room with open fireplace
- Recent Re-fitted Kitchen
- Gas Central Heating
- Style and charm aplenty

## Viewing

Please contact our Oxford Sales Office on 01865 510000 if you wish to arrange a viewing appointment for this property or require further information.

## Energy Efficiency Graph

